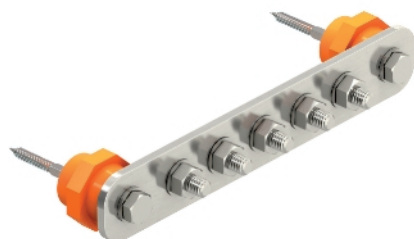


Equipotential busbar BigBar for industrial application



- Main potential equalisation to VDE 0100 Part 410 and Part 540, and also lightning protection potential equalisation to VDE 0185-305 (IEC 62305)
- Insulation feet
- Quick, simple assembly of connection conductors to the contact rail using lock bolts M10
- The high-grade stainless steel versions (V2A) are suitable for outdoor use
- Complete with anchors and bolts for wall mounting
- With lock washer (DIN 137) for bolt locking against loosening (e.g. required in industry and explosion-protected areas)

Type	Number of connections	Width mm	Length mm	Height mm	Pack. pcs	Weight kg/100 pcs.	Item No.
1802 5 VA	5	40	246	5	1	90,000	5015854
1802 10 VA	10	40	408,5	5	1	190,000	5015866

V2A Stainless steel, grade 304

Dimensions

