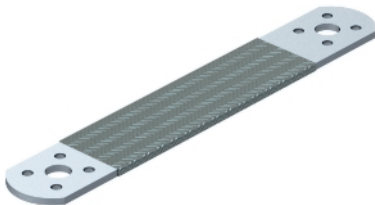


Connection and expansion strip



- Copper strip 35 mm<sup>2</sup>, tin-plated
- Highly-flexible with rigid ends
- Each end with mounting hole Ø 10 mm and 4 mounting holes Ø 4.3 mm

Type	Pack.		Weight		Item No.
	pcs	kg/100 pcs.	pcs	kg/100 pcs.	
856	10	8,125			5331501

**Cu** Copper

**Sn** Tin-plated

Dimensions

